



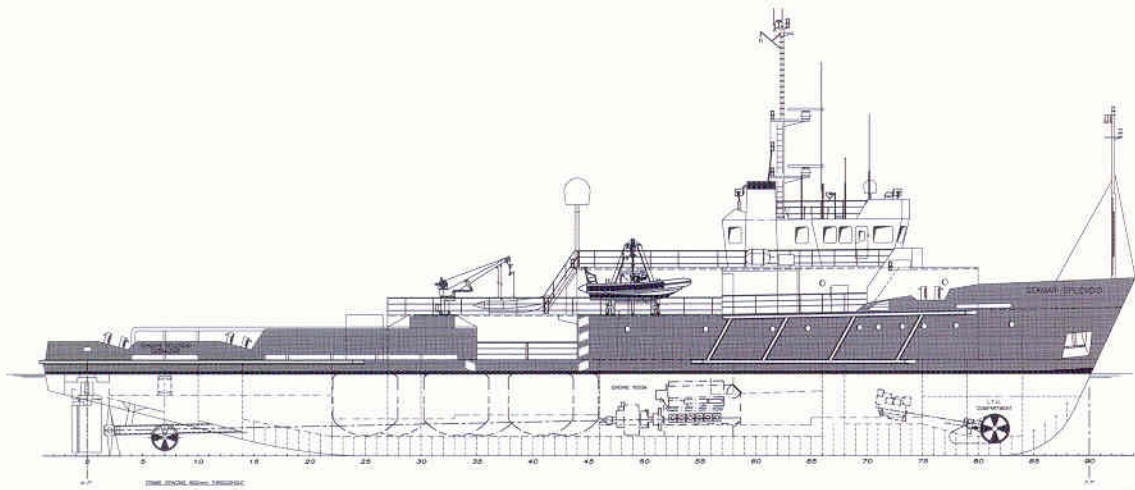
Seamar

**m.v. SeaMar
Splendid**
*multi purpose
offshore support vessel*

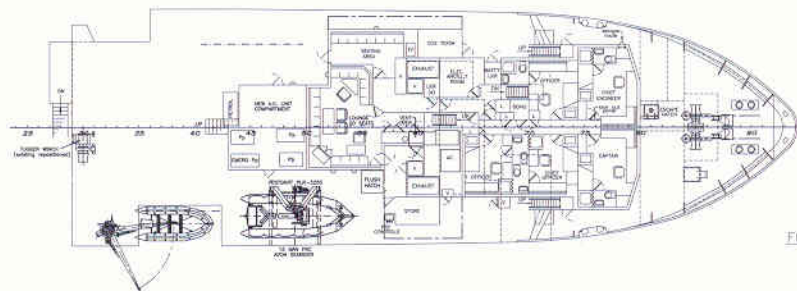
- **Air diving support**
- **ROV Support**
- **IRM activities**
- **Seismic Support**
- **Survey works**
- **Wind farm inspection
and maintenance**



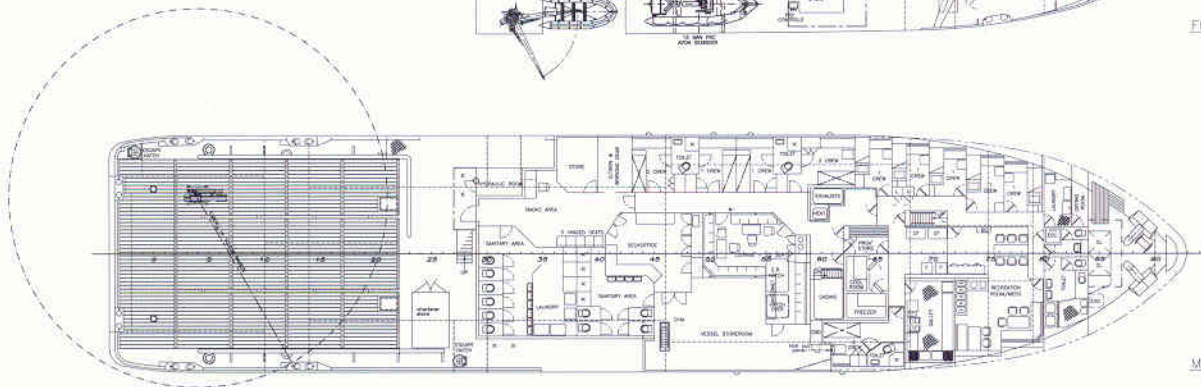
m.v. SeaMar Splendid is a multipurpose offshore support vessel designed to perform
Air diving | Survey works | Seismic support | ROV support
and IRM activities for the oil and gas, telecommunications and wind farm industries



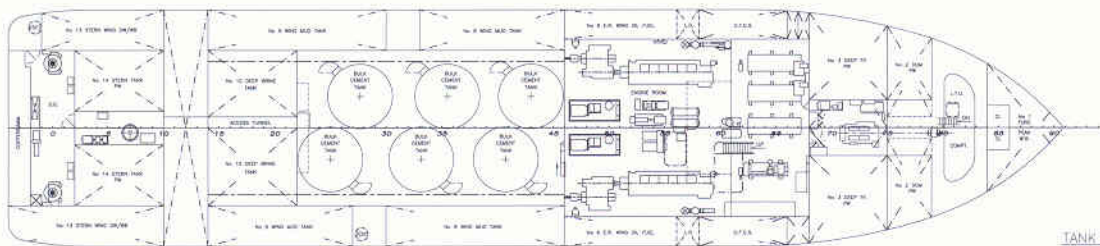
PROFILE



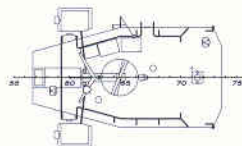
FOGSLE DECK



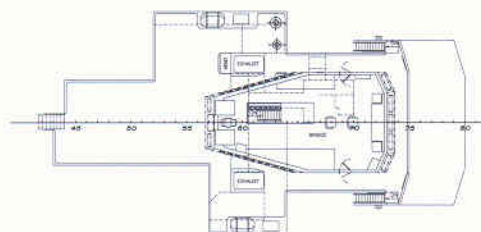
MAIN DECK



TANK TOP



BRIDGE TOP



BRIDGE DECK

Vessel Specifications

Flag

Gibraltar

Call Sign

ZDJF2

Classification

Det Norkse Veritas + IAI EO DK(+)

IMO

8503515

Dimensions

l.o.a.	59,21	m
l.b.p.	54,05	m
Width	12,80	m
Moulded Depth	5,2	m
Max Draft	4,4	m
Gross Tonnage	1199	t
Net Tonnage	385	t
Deadweight	1297	t

Fuel

Capacity MGO 355 m³

Performances

8 Knots	-	2,5	ton/day
10 Knots	-	4,0	ton/day
12 Knots	-	6,5	ton/day
At Anchor	-	0,7	ton/day

Freshwater

Capacity 338 m³

Machinery

2 ea. 1320 kW Main Engines
Controllable Pitch propellers
3 ea. 312,5 kVA / 60 Hz Generators
112,5 kVA/ 60 Hz Emergency Generator
671 hp Bow thruster
475 hp Stern thruster

Deck

Main deck	160 m ²
Focsle deck	72 m ²
Main deck load	5 ton/m ²
Deck crane	1,6 ton@10,2 m
Capstan	2 ea 5 ton
Tugger winch	7 ton
Fast rescue craft	
Work boat	

Nautical equipment

Furuno ARPA radar
Bridgemaster radar
Furuno AIS
DGPS Furuno
GPS Furuno
Robertson Autopilot
Brown SG Gyro

Manoeuvring Equipment

2 ea Becker Rudders
Independent steering control
Kongsberg joystick control

Accommodation

10 charterer personnel, one and two berth cabins
Survey room/client office with internet access
2 Recreation rooms both with Internet access
Satellite TV in all cabins and dayrooms
Air conditioning throughout

Communication Equipment

GMDSS compliance sea area A1/A2
SAT-C terminal LRIT compliance
Internal phone system
P.A system
VSAT terminal - 1 Mb/256 kps
Mini M terminal

Optional

Additional charterer accommodation
4 point mooring system
Internet facility upgrade to maximum 2 Mb / 256 kps